

Device Control Server (DC-Server)

Compuflex's DC-Server provides the means to connect to a broad range of cash automation equipment from virtually any host environment.

OS Independence

DC-Server uses XML data structures to control cash automation equipment. This means that any host on any operating system can pass standard XML messages to the DC-Server for processing

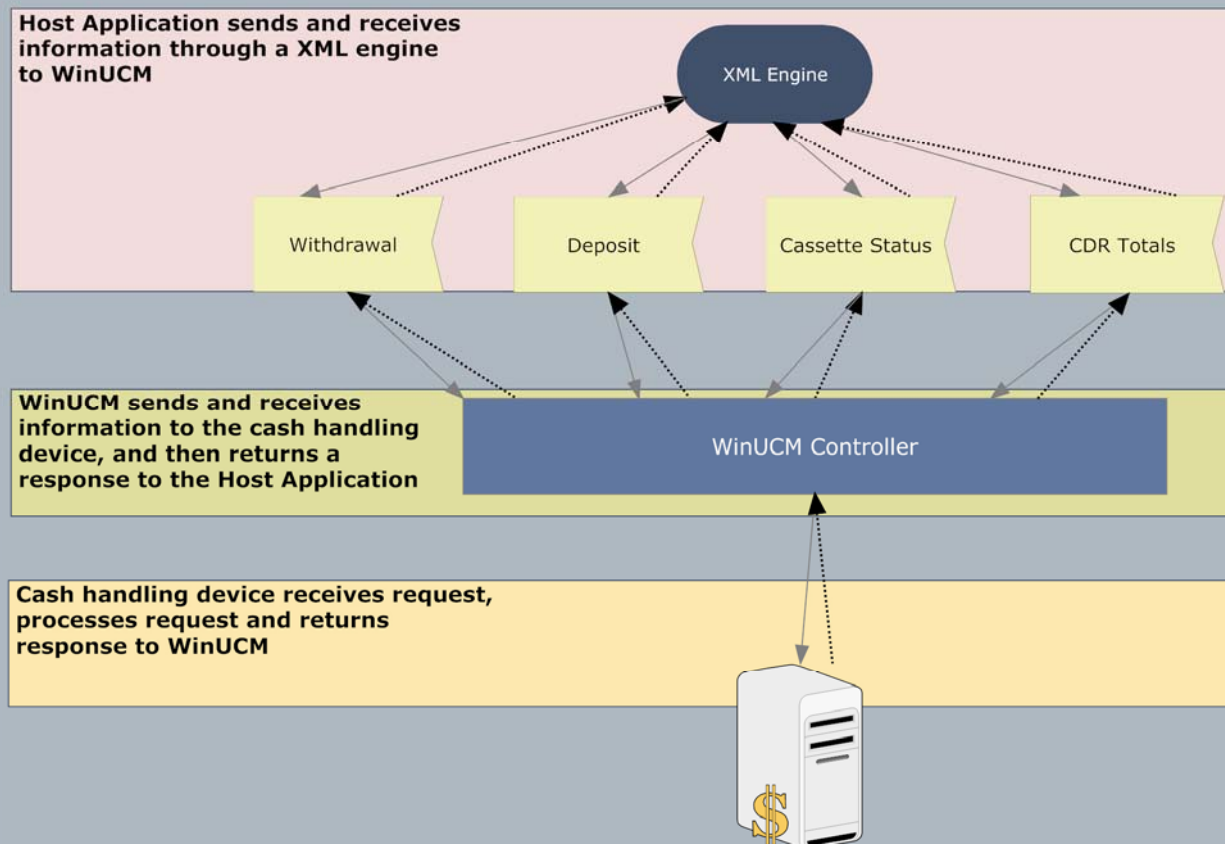
Hardware Independence

Once the XML interface is implemented, the DC-Server will work with all major cash handling device vendors

Timing Independence

A Host can manage a number of cash automation nodes without the complexity and potential timing issues associated with cash handling devices

DC-Server Configuration



30 Hillside Avenue
Springfield, NJ 07081

phone: 908.620.2777
fax: 908.620.2772

DC-Server / WinUCM Features

Dispense & Deposit Features:

Automatic transaction - Allows users to dispense according to a predefined bill mix

Nominate transactions – Allows user to specify the denominations requested by the customer

Vault Buy - Offers the ability to buy money from the cash handling device without interfering with the current teller

Deposit - WinUCM not only deposits cash into a cash recycler, but the interface displays detailed information about the transaction. Need to reverse a transaction? Just hit the cancel button and the money is returned to the customer.

Vault Sell - Deposit large transactions into the cash recycler without interfering with the current teller

Holdup / Bait Money Dispense - As an extra security feature, users can dispense bait money based on a predefined holdup mix.

Enhanced Features:

Support for coin dispenser - WinUCM supports all major coin dispensers

Searchable electronic journal - Find detailed information about all activity by teller, transaction, date or keyword.

Status - Get detailed status of any cassette, hopper, stacker or roller module

Balancing Features:

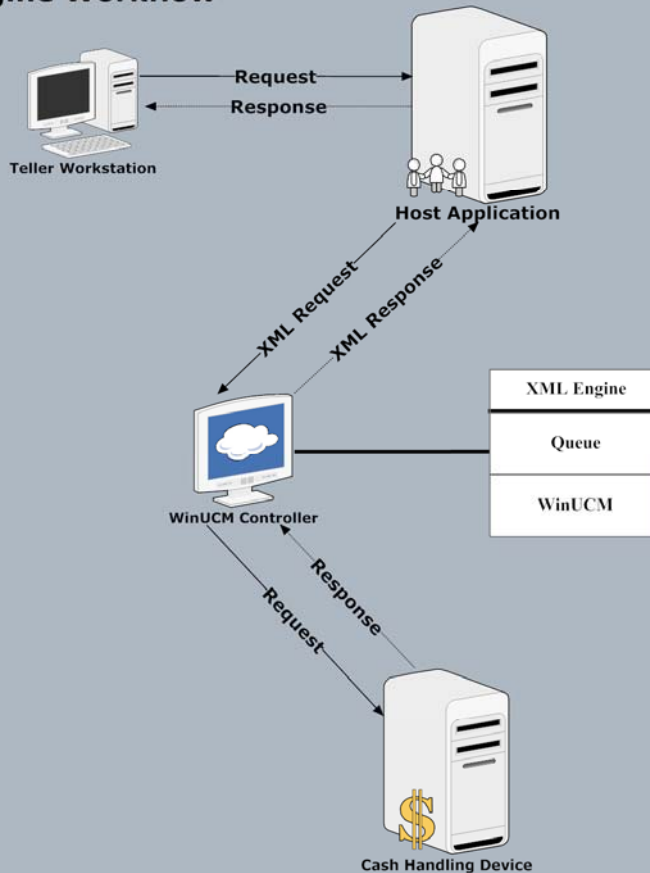
Machine Balancing - provides detailed reports on cash in and cash out transactions

Loading and Depleting Functions - Ability to add and remove cash

Station Totals - Detailed reports of all station activity

Active Teller Totals - Detailed report of transactions by current teller

XML Engine Workflow



30 Hillside Avenue
Springfield, NJ 07081

phone: 908.620.2777
fax: 908.620.2772